

ennVee®



CASE STUDY

Migrating from Oracle Discoverer to Cognos

Client Snapshot

- Private College
- Location: Texas, US
- 5,000 students

Scope

- Analyze the in-scope Discoverer report workbooks
- Extract the business logic for each report using ennVee's automated tool, **ennSight**
- Migrate 500 Oracle Discoverer reports to Cognos
- Extract the metadata of the out of scope (remaining) Discoverer reports for future usage

Solution Components

- Discoverer Plus 11g
- Discoverer Viewer 11g
- Discoverer Administrator 11g
- IBM Cognos
- **ennSight** automated Discoverer extraction and migration tool

For years, a private university has used Oracle Discoverer exclusively to report on its various campus, campaign, and business activities, which has resulted in the creation of about 9,000 reports. Wanting to move to a supported platform, the Business Intelligence office decided to migrate to IBM Cognos, as it was already implemented, licensed, and used by other departments across campus.

The university has five different modules:

1. FINAID relates to reports around the grants that the university receives from various government and non-government organizations.
2. FMSHR relates to reports around Finance and HR functions.
3. ALUM relates to reports around university alumni.
4. STUREC relates to reports around student records.
5. DISC### relates to miscellaneous Discoverer reports.

Solution

After performing an initial assessment of the university's Discoverer environment, approximately 9,000 active Discoverer reports were identified. Subsequently, the university's business users scrubbed the list down to 500 essential reports that needed to be migrated to Cognos. The ennVee team successfully migrated all reports to Cognos using our proprietary ennSight tool, which automatically extracts and migrates complete reports.

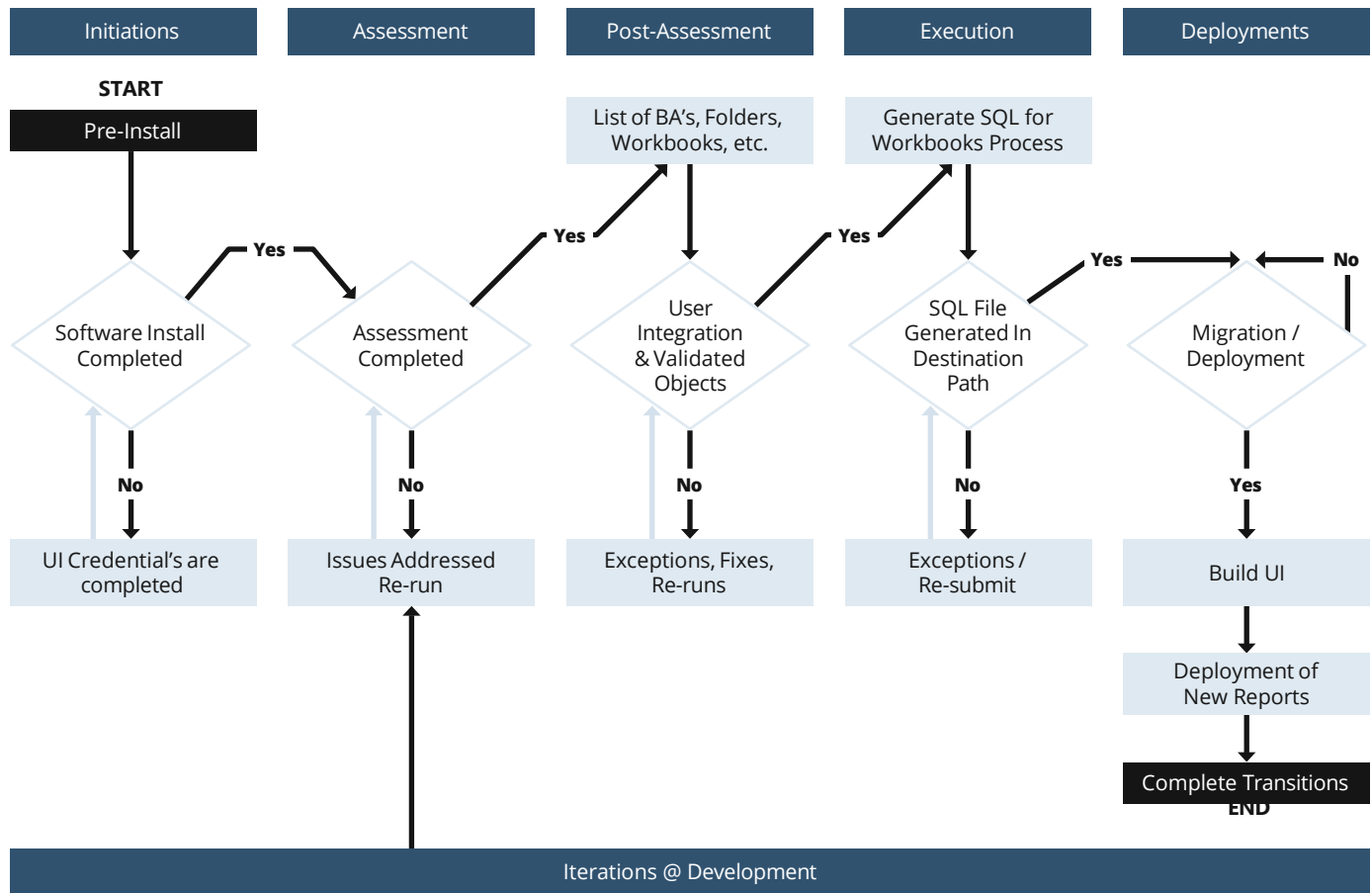
Discoverer Metadata Extraction

After converting the reports into Cognos, we extracted and made available the metadata for the remaining reports.

Testing was the most important phase after deployment, where we tested each report and successfully deployed them onto the Cognos server. Post deployment, ennVee met with the university business users, making minor changes and enhancements to the reports based on user feedback.

One major complexity that we resolved was converting the parameterized reports and cross-tab reports. The parameterized reports were built through "Prompt Value" to get the parameter value for all the reports.

Oracle Discoverer to Cognos Migration Process



Outcome

All reports were successfully migrated to Cognos in four weeks. The university now has the freedom to run all of the Discoverer Reports in Cognos, thus avoiding obsolescence. Additionally, the availability of the metadata for the remaining reports provides greater flexibility of building reports in Cognos as needed.

Example report converted from Oracle Discoverer to Cognos:

Discoverer

Double click here to edit this title.

View Name	View Description	Element Type	Base Type	Element Id	Parent Type	Parent Id	Element Name	Element Description
ADVISING VIEW	Version 1.0 - View for creating various academic advising reports.	FIL	FIL	118389 OBJ		115381	Dead Ind IS NULL	
HELLO BOOK VIEW	Version 1.0 - View specifically written for creating stu/fil	FIL	FIL	118620 OBJ		118541	Dead Ind IS NULL	
HELLO BOOK VIEW	Version 1.0 - View specifically written for creating stu/fil	FIL	FIL	118623 OBJ		118541	Confil Ind IS NULL	
REGISTRATION VIEW	Version 1.0 - View contains detailed registration info	FIL	FIL	118393 OBJ		118582	Dead Ind IS NULL	
STUDENT DEMOGRAPHIC VIEW	Version 1.0 - General view of students/enrollees for (FIL	FIL	FIL	118382 OBJ		115395	Dead Ind IS NULL	Optional Filter - Filters out deca
STUDENT DEMOGRAPHIC VIEW	Version 1.0 - General view of students/enrollees for (FIL	FIL	FIL	126162 OBJ		115395	Registered Ind = 'Y'	
	Course General Information Base Table	FIL	FIL	108821 OBJ		108797	En Term = Max_SICBCRIS	Max_Term
	Student Registration Table	FIL	FIL	113979 OBJ		103447	Enls Code = 'EL'	Eligible Students
	Student Registration Table	FIL	FIL	113802 OBJ		106027	Enls Code = 'CL'	
	Student Base Table	FIL	FIL	108517 OBJ		108937	Enls Code = 'I'	
	Multiple Advisors Repeating Table	FIL	FIL	109414 OBJ		102383	Term Code EQ = Max Adv	
	Level GPA Table	FIL	FIL	108819 OBJ		102386	Gpa Type Ind = 'Y'	
	Term GPA Table	FIL	FIL	108811 OBJ		106893	Gpa Type Ind = 'Y'	
	Person Identification/Name Repeating Table	FIL	FIL	108789 OBJ		102391	Change Ind IS NULL	Change_Ind
	Person Identification/Name Repeating Table	FIL	FIL	138605 OBJ		138605	Change Ind IS NULL	
	Person Identification/Name Repeating Table	FIL	FIL	108805 OBJ		103456	Change Ind IS NULL	



View Documentation

View Name	View Description	Element Type	Base Type	Element Id	Parent Type	Parent Id	Element Name	Element Description
ADVISING VIEW	Version 1.0 - View for creating various academic advising reports. Does not include registration detail.	FIL	FIL	118389 OBJ		115381	Dead Ind IS NULL	
HELLO BOOK VIEW	Version 1.0 - View specifically written for creating student portion of info base or other student directory needs. This view contains mandatory conditions for entering positive values for directory preferences and confidentiality ind.	FIL	FIL	118620 OBJ		118541	Dead Ind IS NULL	
HELLO BOOK VIEW	Version 1.0 - View specifically written for creating student portion of info base or other student directory needs. This view contains mandatory conditions for entering positive values for directory preferences and confidentiality ind.	FIL	FIL	118623 OBJ		118541	Confil Ind = 'Y'	
REGISTRATION VIEW	Version 1.0 - View contains detailed registration information for current/future terms. Records are by term and student and have a separate row for each course in which a student is registered.	FIL	FIL	118393 OBJ		118582	Dead Ind IS NULL	
STUDENT DEMOGRAPHIC VIEW	Version 1.0 - General view of students/enrollees for current/future terms. Contains demographic information and general student information.	FIL	FIL	118382 OBJ		115395	Dead Ind IS NULL	Optional Filter - Filters out deceased students
STUDENT DEMOGRAPHIC VIEW	Version 1.0 - General view of students/enrollees for current/future terms. Contains demographic information and general student information.	FIL	FIL	126162 OBJ		115395	Registered Ind = 'Y'	
	Course General Information Base Table	FIL	FIL	108821 OBJ		108797	En Term =	Max_Term
	Student Registration Table	FIL	FIL	113979 OBJ		103447	Enls Code = 'EL'	Eligible Students
	Student Registration Table	FIL	FIL	113802 OBJ		106027	Enls Code = 'CL'	
	Student Base Table	FIL	FIL	108517 OBJ		108937	Enls Code = 'I'	
	Multiple Advisors Repeating Table	FIL	FIL	109414 OBJ		102383	Term Code EQ = Max Advisor	
	Level GPA Table	FIL	FIL	108819 OBJ		102386	Gpa Type Ind = 'Y'	
	Term GPA Table	FIL	FIL	108811 OBJ		106893	Gpa Type Ind = 'Y'	
	Person Identification/Name Repeating Table	FIL	FIL	108789 OBJ		102391	Change Ind IS NULL	Spidren_Change_Ind
	Person Identification/Name Repeating Table	FIL	FIL	138605 OBJ		138605	Change Ind IS NULL	
	Person Identification/Name Repeating Table	FIL	FIL	108805 OBJ		103456	Change Ind IS NULL	

Cognos

Learn more at www.ennvee.com/ennsight

About ennVee

ennVee is a global professional services firm that provides Oracle application management, business, and technology consulting services to organizations around the world. Through automation-based application delivery, we help businesses accelerate project completion, reduce disruption, get it right the first time, and reduce the cost to deliver tomorrow's solutions today. To learn more, visit www.ennvee.com.